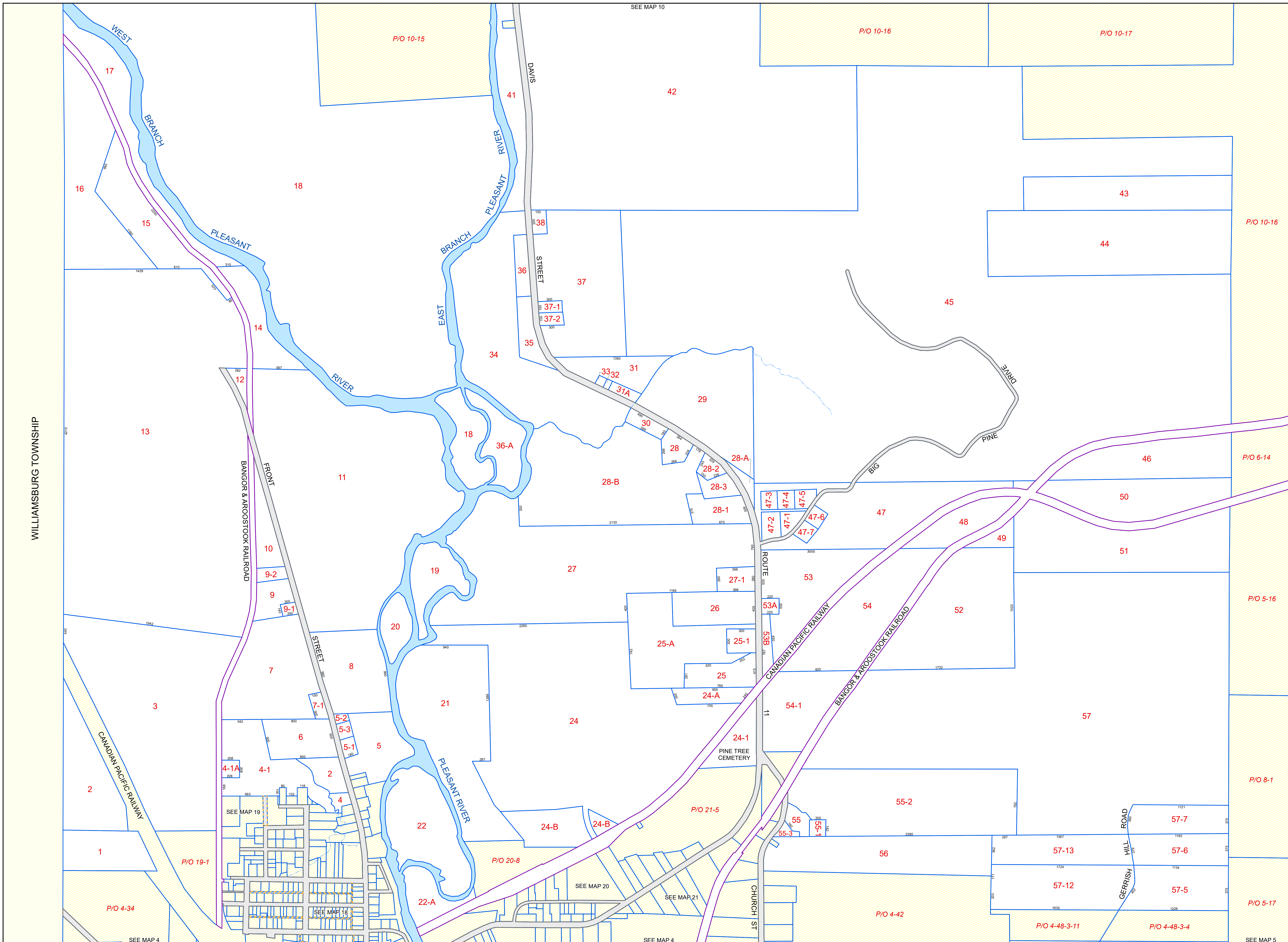
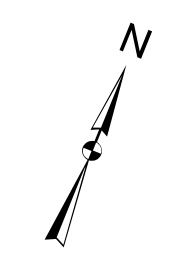


SEE MAP 10



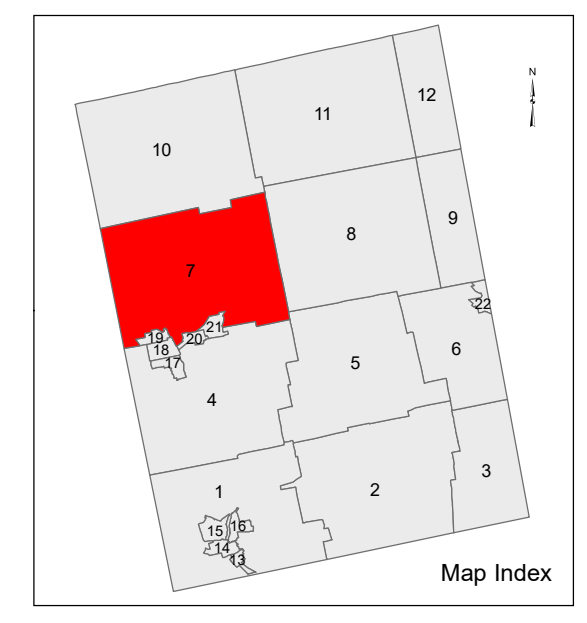
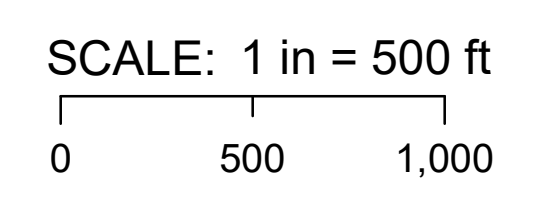
PROPERTY MAPS
Tax Map
 7
BROWNVILLE
 Piscataquis County, ME

DRAFT MAP - FOR REVIEW ONLY!



- LEGEND**
- PROPERTY LINE
 - EASEMENT/RIGHT-OF-WAY
 - PUBLIC RIGHT-OF-WAY
 - PRIVATE RIGHT-OF-WAY
 - RAILROAD RIGHT-OF-WAY
 - HISTORIC/SUBDIVISION LINE
 - PARCEL HOOK
 - 2-1** PARCEL ID NUMBER
 - 150** SURVEY DIMENSION (FEET)

The information on this map is for assessment purposes only, is not a legal survey, and is not intended to be used for conveyance.



Original map created by J. W. Sewall Company.
 Map updated by LatLong Logic, LLC.
 (May 2019)

Brownville Assessor's Office
 586 Main Road
 Brownville, Maine 04414
 (207) 965-2561