
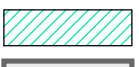


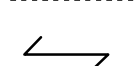

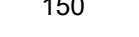


PROPERTY MAPS
Tax Map 19
BROWNVILLE
 Piscataquis County, ME

DRAFT MAP - FOR REVIEW ONLY!

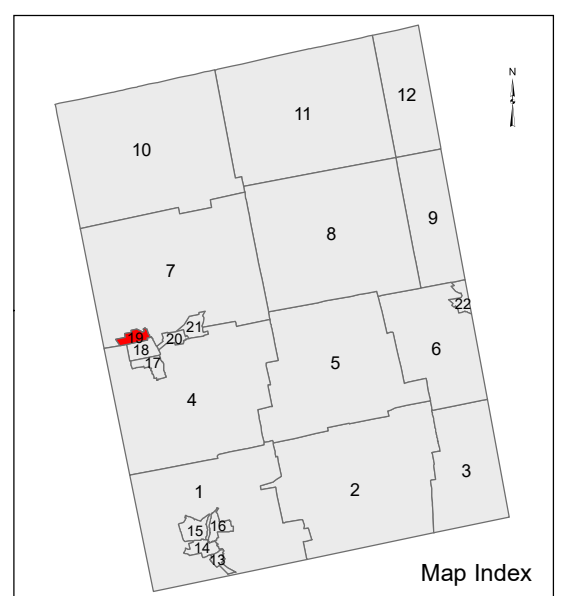
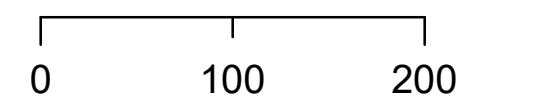


LEGEND

-  PROPERTY LINE
-  EASEMENT/RIGHT-OF-WAY
-  PUBLIC RIGHT-OF-WAY
-  PRIVATE RIGHT-OF-WAY
-  RAILROAD RIGHT-OF-WAY
-  HISTORIC/SUBDIVISION LINE
-  PARCEL HOOK
- 2-1** PARCEL ID NUMBER
- 150** SURVEY DIMENSION (FEET)

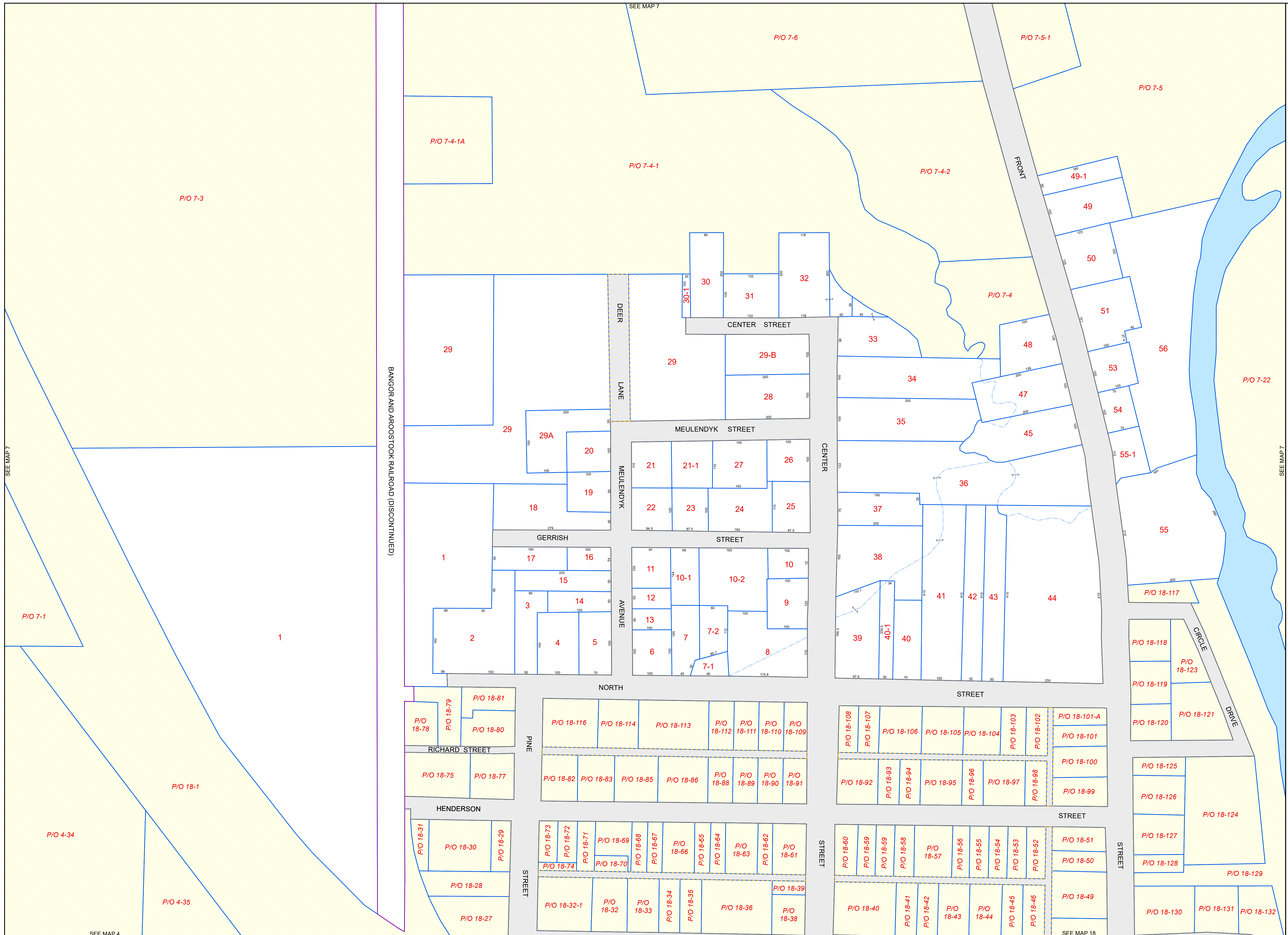
The information on this map is for assessment purposes only, is not a legal survey, and is not intended to be used for conveyance.

SCALE: 1 in = 100 ft



Original map created by J. W. Sewall Company.
 Map updated by LatLong Logic, LLC.
 (May 2019)

Brownville Assessor's Office
 586 Main Road
 Brownville, Maine 04414
 (207) 965-2561



SEE MAP 7

SEE MAP 7

SEE MAP 4

SEE MAP 18

SEE MAP 7

BANGOR AND AROOSTOOK RAILROAD (DISCONTINUED)